



Emergency Preparedness and Response

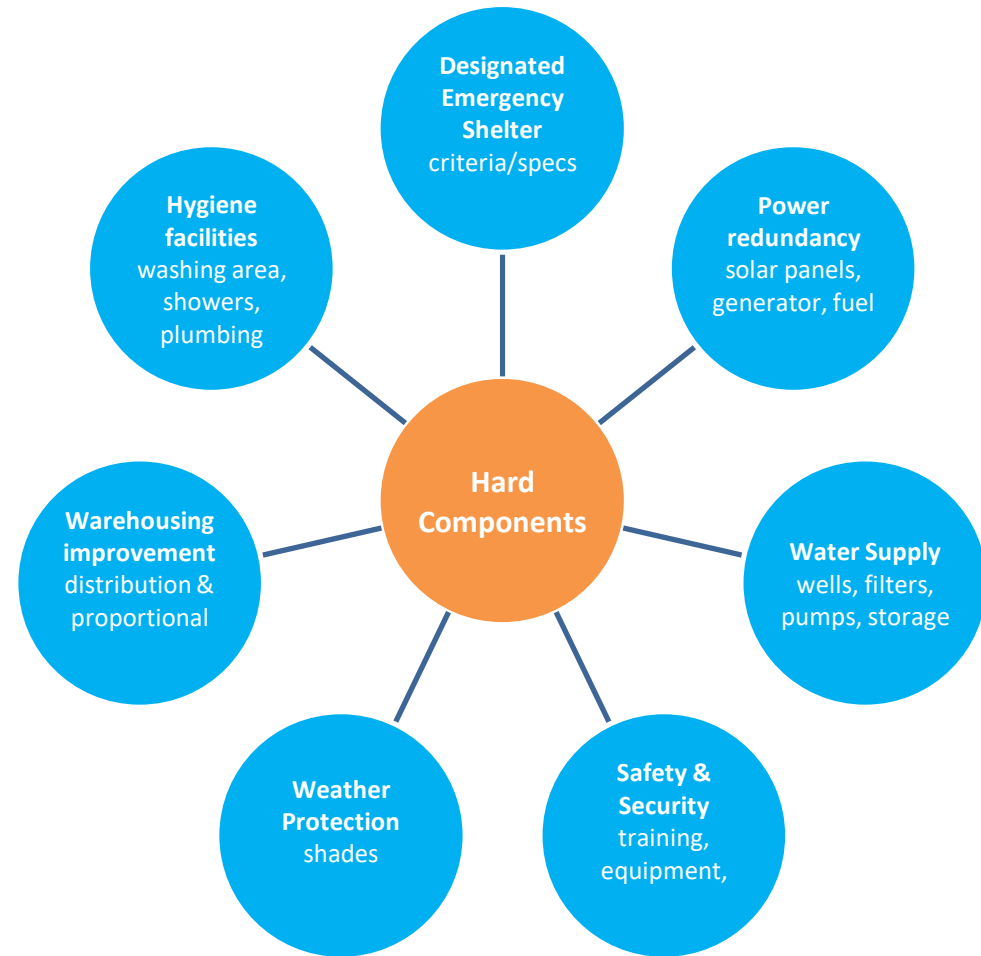
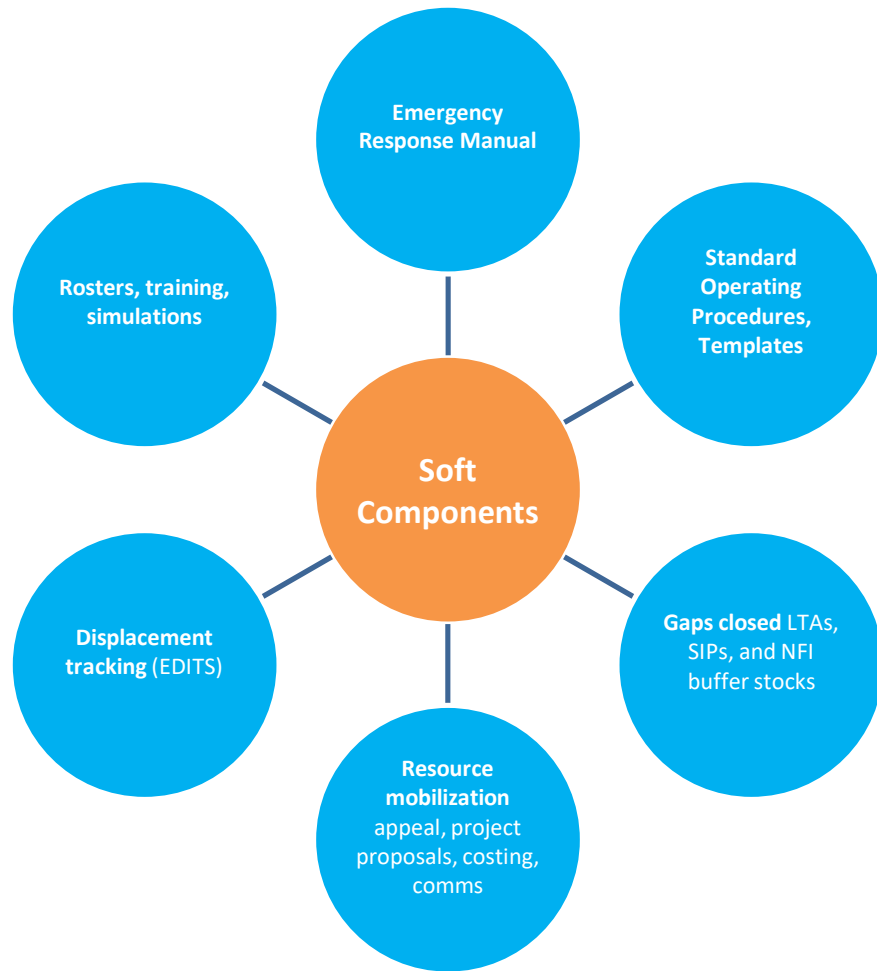
10 November 2017

emergency preparedness and response office

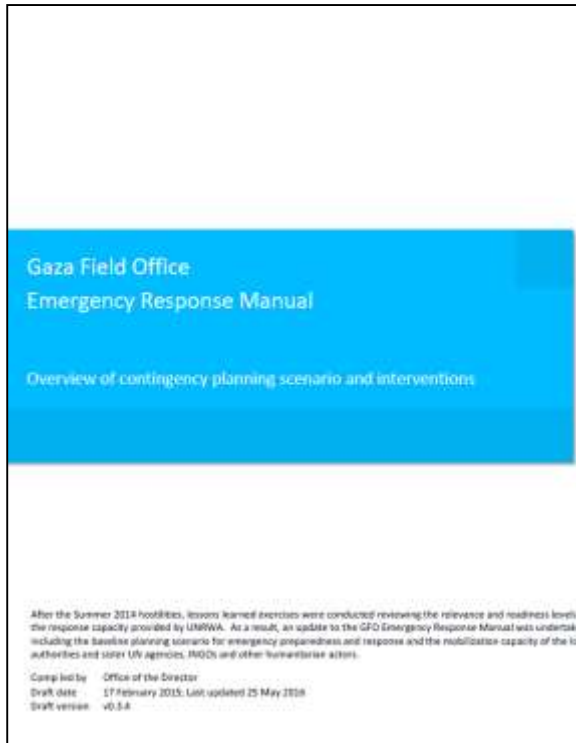
Emergency Preparedness and Response Unit

EPRU provides sustained, institutional coordination in emergency response capabilities through systems, processes, structures and people to best enable the Field Office to respond to a crisis due to natural or man-made causes.

Emergency Preparedness



Emergency Preparedness

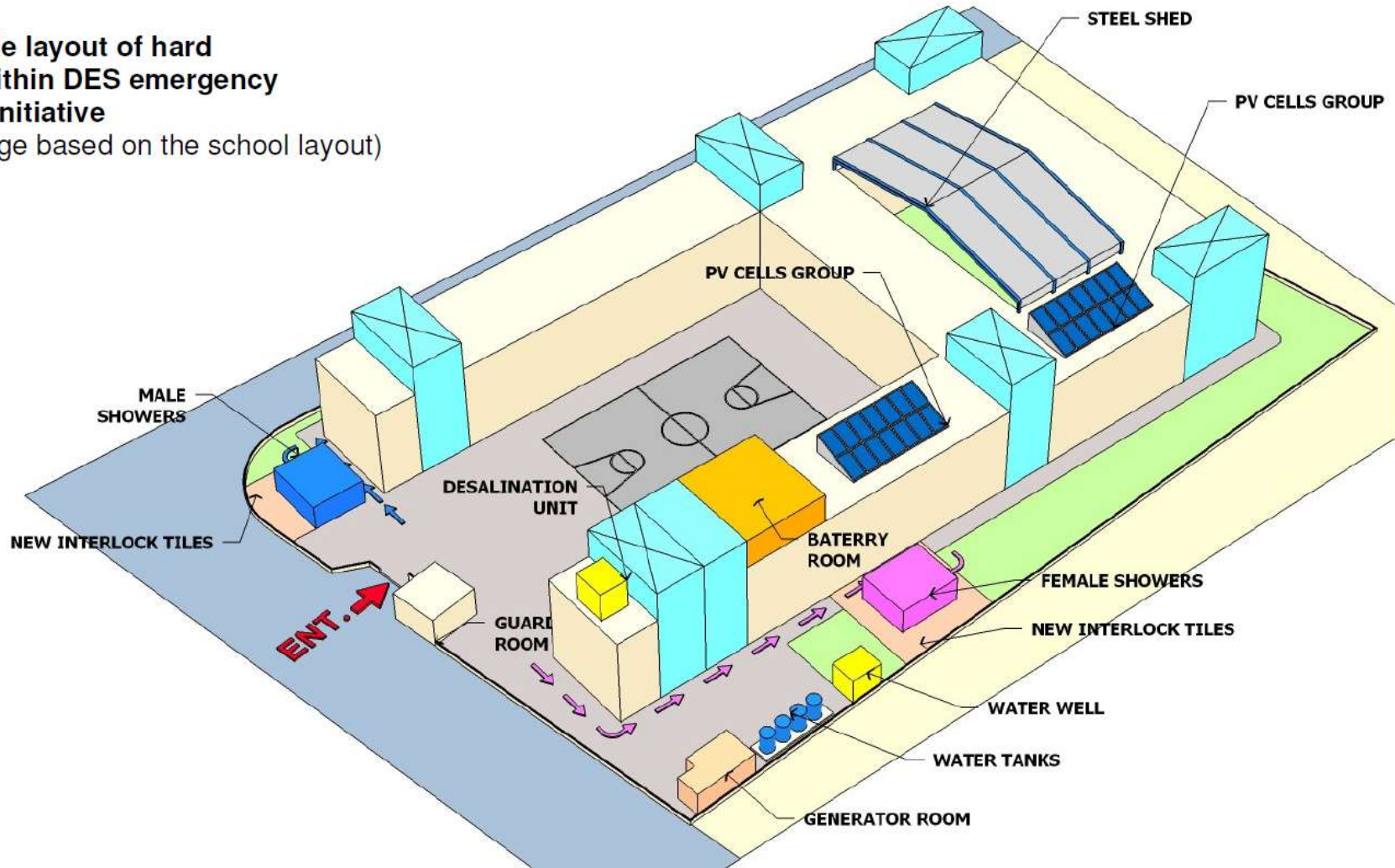


Intervention;
Specification criteria;
Timeline guidance;
Emg. Mgmt. structure;
M&E requirements; and
Costed response plan

DES facility

Figure 1: Sample layout of hard components within DES emergency preparedness initiative (subject to change based on the school layout)

UNRWA© 2016



DISALINATION UNIT



GENERATOR



2014 Gaza conflict and UNRWA shelter response

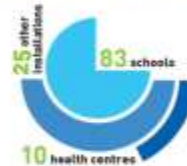
“The massive death and destruction in Gaza have shocked and shamed the world.”

UN Secretary-General Ban Ki-moon

“The physical and psychological scars are everywhere to be seen in the Gaza Strip. Countless children live with the traumas endured during the war and over a thousand live with what will be lifelong disabilities. This should be a reminder that conflicts are first and foremost measured by the human cost that they inflict.”

UNRWA Commissioner-General Pierre Krähenbühl

UNRWA Damaged Installations

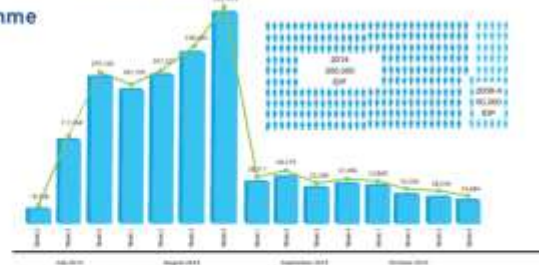


UNRWA repaired and rebuilt all of its damaged installations



More than 300,000 children are in need of psycho-social support. Common symptoms are: intense fear, bed wetting, nightmares, eating disorders.

Internally Displaced Persons (IDPs) in UNRWA Shelters 13 July - 30 October 2014

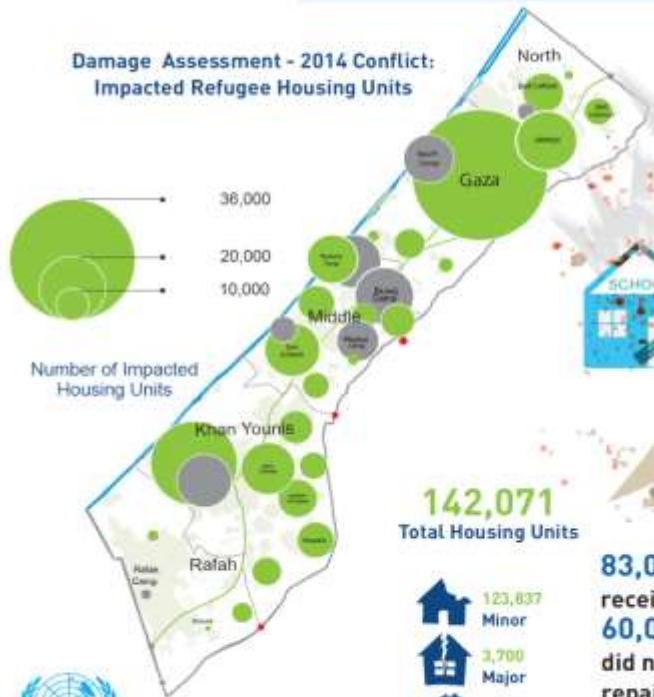


65,000 persons remain displaced

UNRWA Collective Centres October 2014 - June 2015 (9 months)



Damage Assessment - 2014 Conflict: Impacted Refugee Housing Units



142,071 Total Housing Units



83,000 refugee families received payments for repair works
60,000 refugee families did not receive payments for repair works due to lack of funding
Almost 1,400 refugee families are receiving payments for reconstruction

As of 31 October 2016

US\$ 213.7 million distributed

Emergency Shelter Programme

US\$ 720 million required
US\$ 257 million pledged
US\$ 463 million shortfall

discussion

